

Michael Baciu

EAST through **SOUTHWEST**





Encino, California (2003)



Bodie, California (1988)



Dante's View. Death Valley, California (1985)



Zabriskie Point. Death Valley, California (1986)



Devil's Golf Course. Death Valley, California (1988)



Los Angeles (during the 1992 riots)



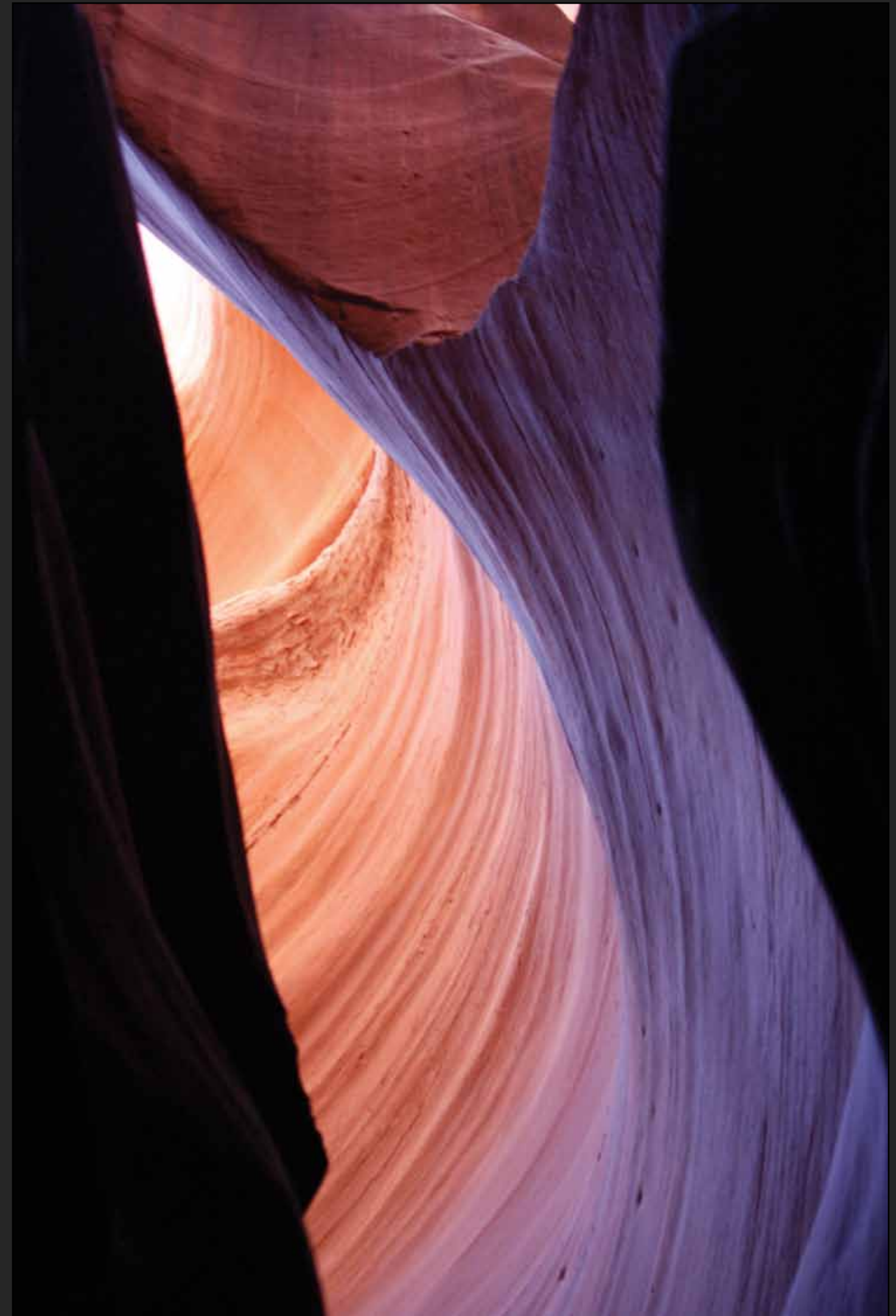
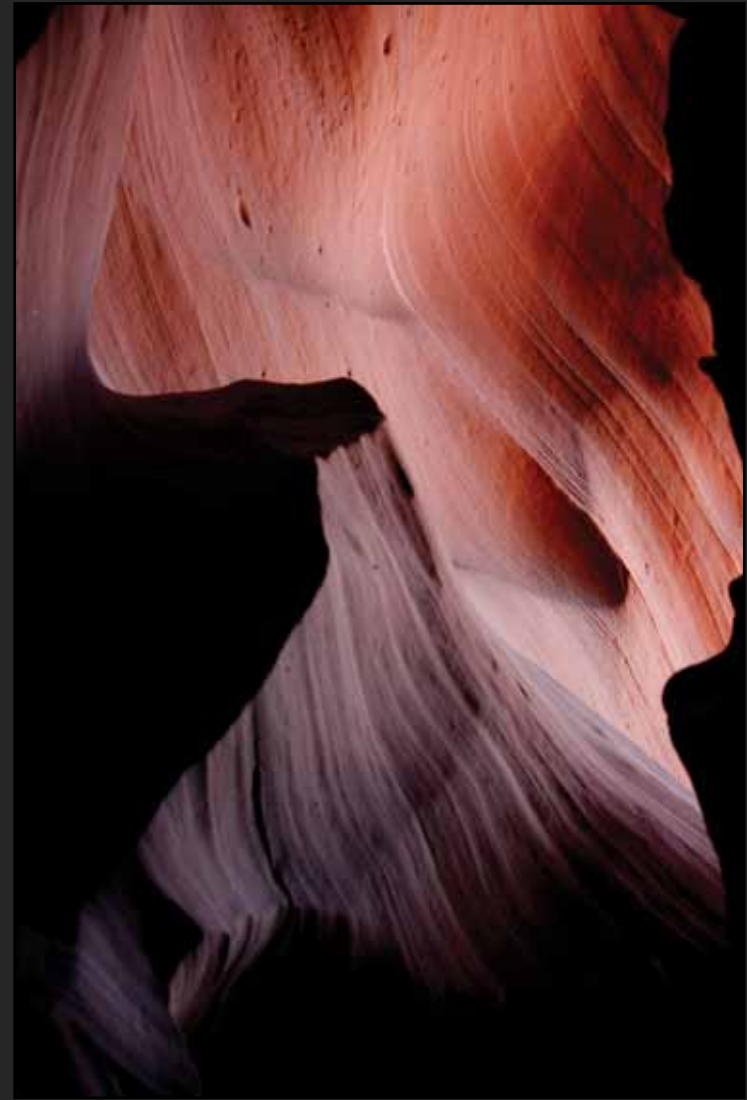
Malibu, California (2003)



Napa Valley, California (1996)



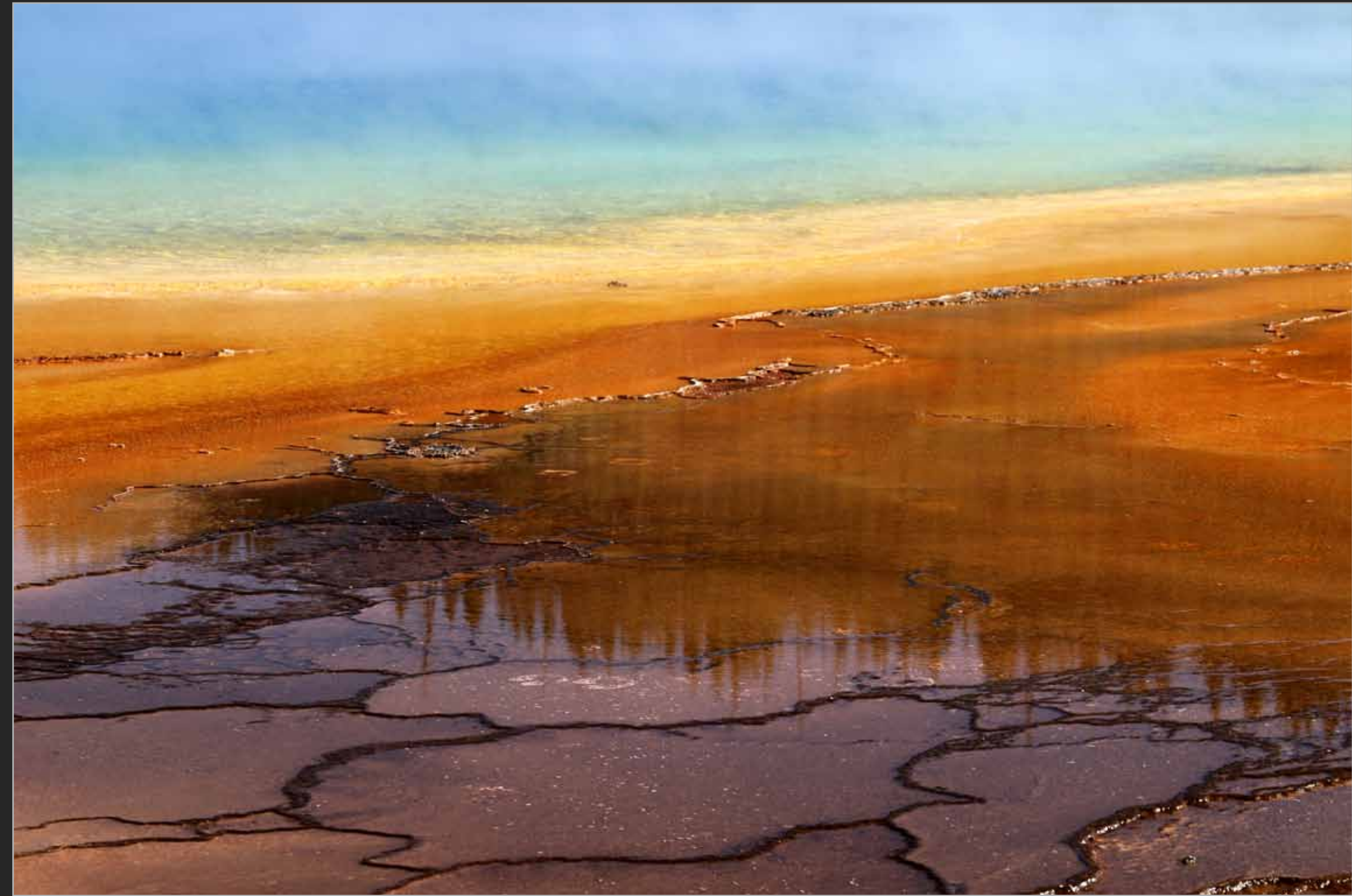
Napa Valley, California (1996)



*Antelope Canyon
Arizona (2007)*



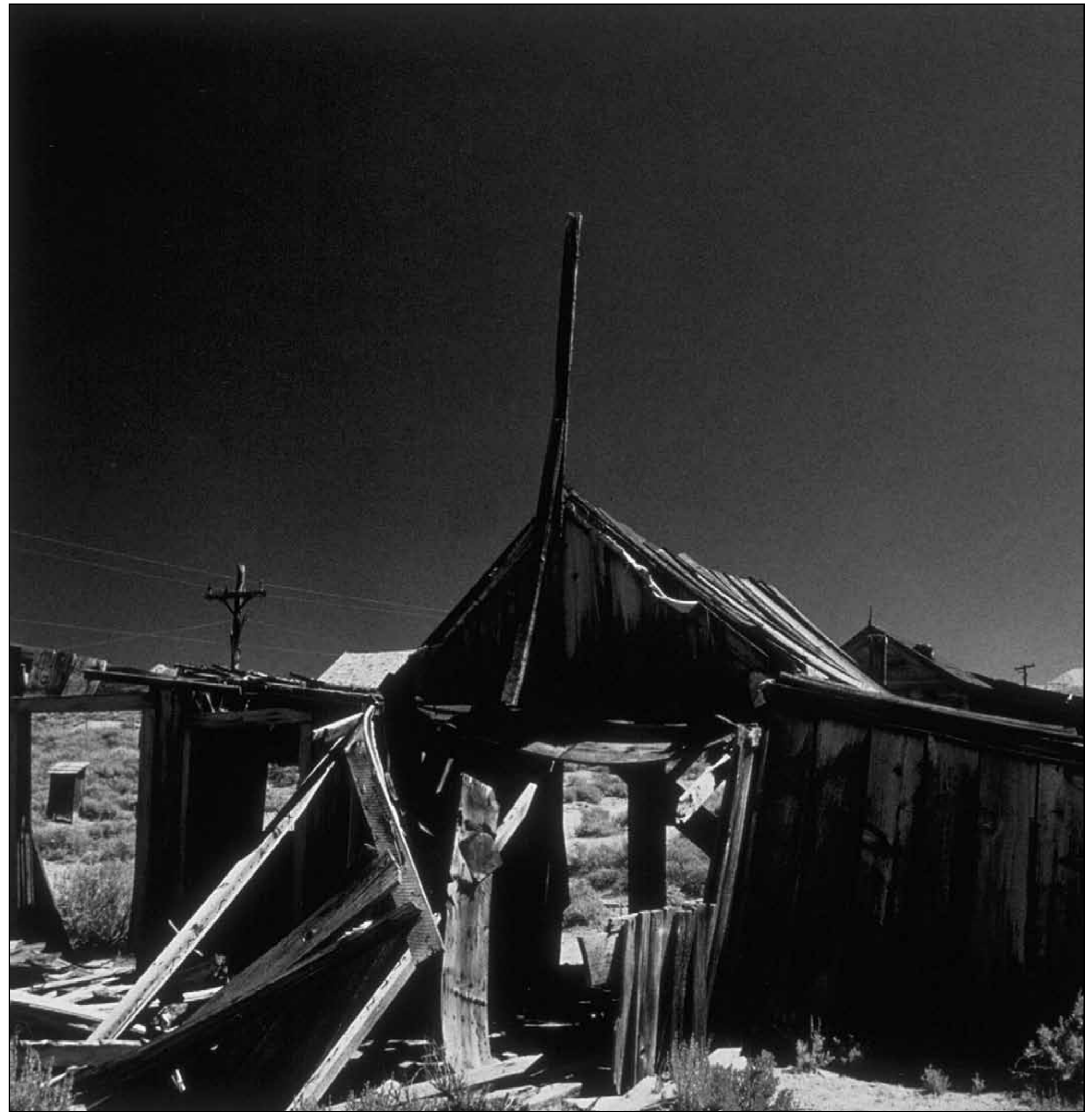
Antelope Canyon, Arizona (2007)



Yellowstone, Wyoming (2019)



Joshua Tree, California (2005)



Bodie, California (1988)



Big Sur, California (2006)



*Bodie,
California
(1988)*





New Mexico backroads (1988)



Toward Four Corners, Arizona (1999)

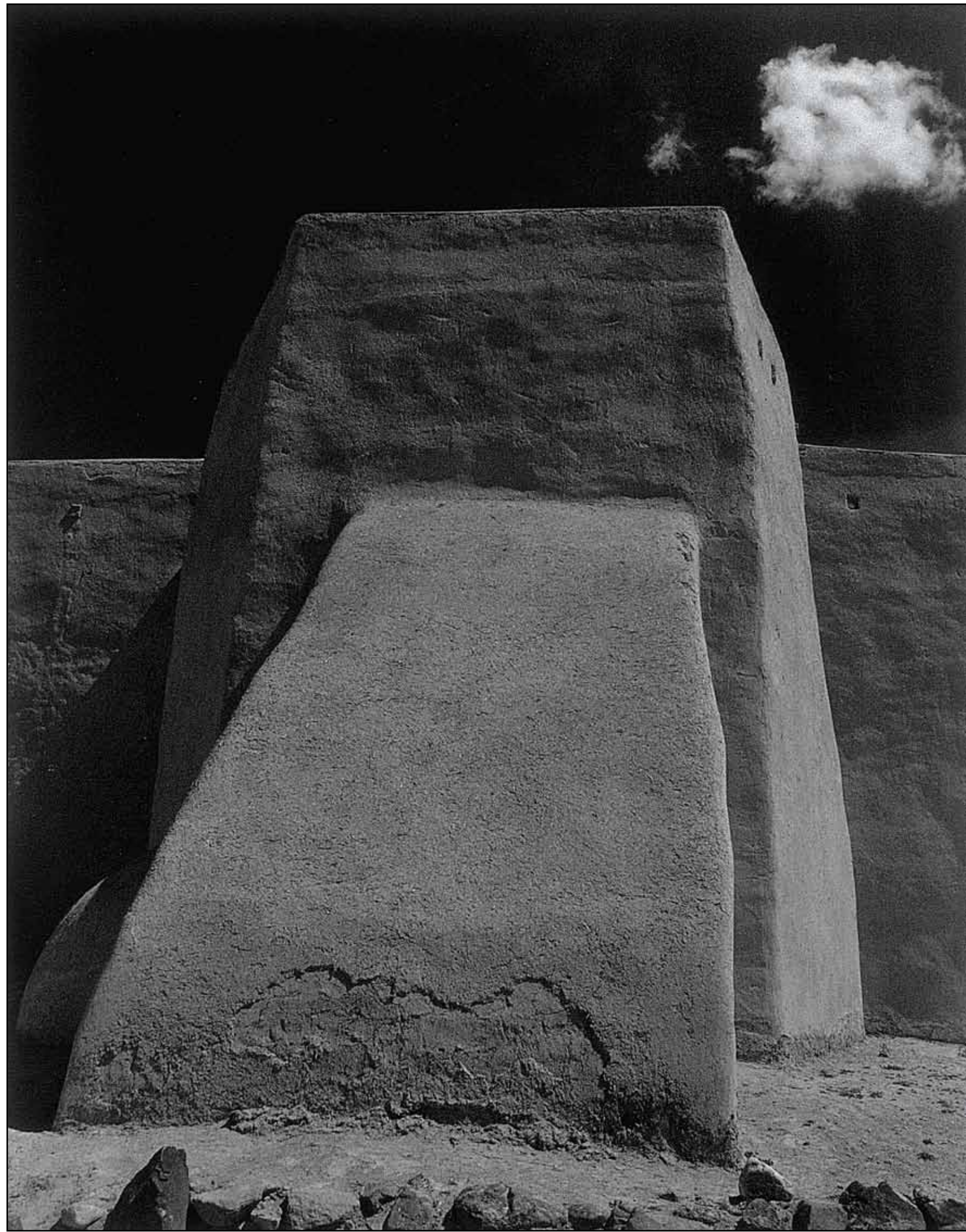


Red Rock Canyon, California (2000)

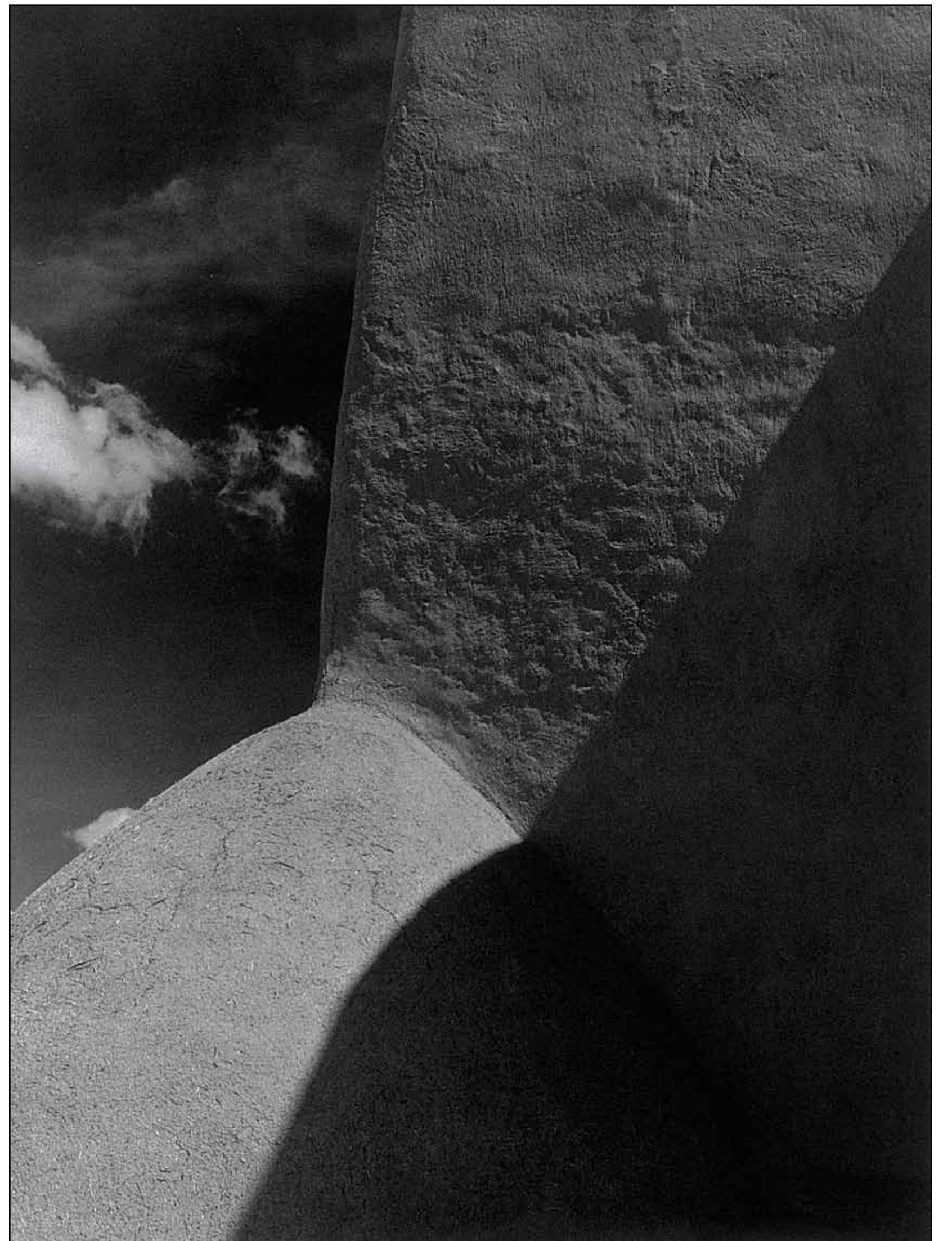


Bodie, California (1988)

New Mexico backroads (1988)



*New Mexico
backroads
(1989)*

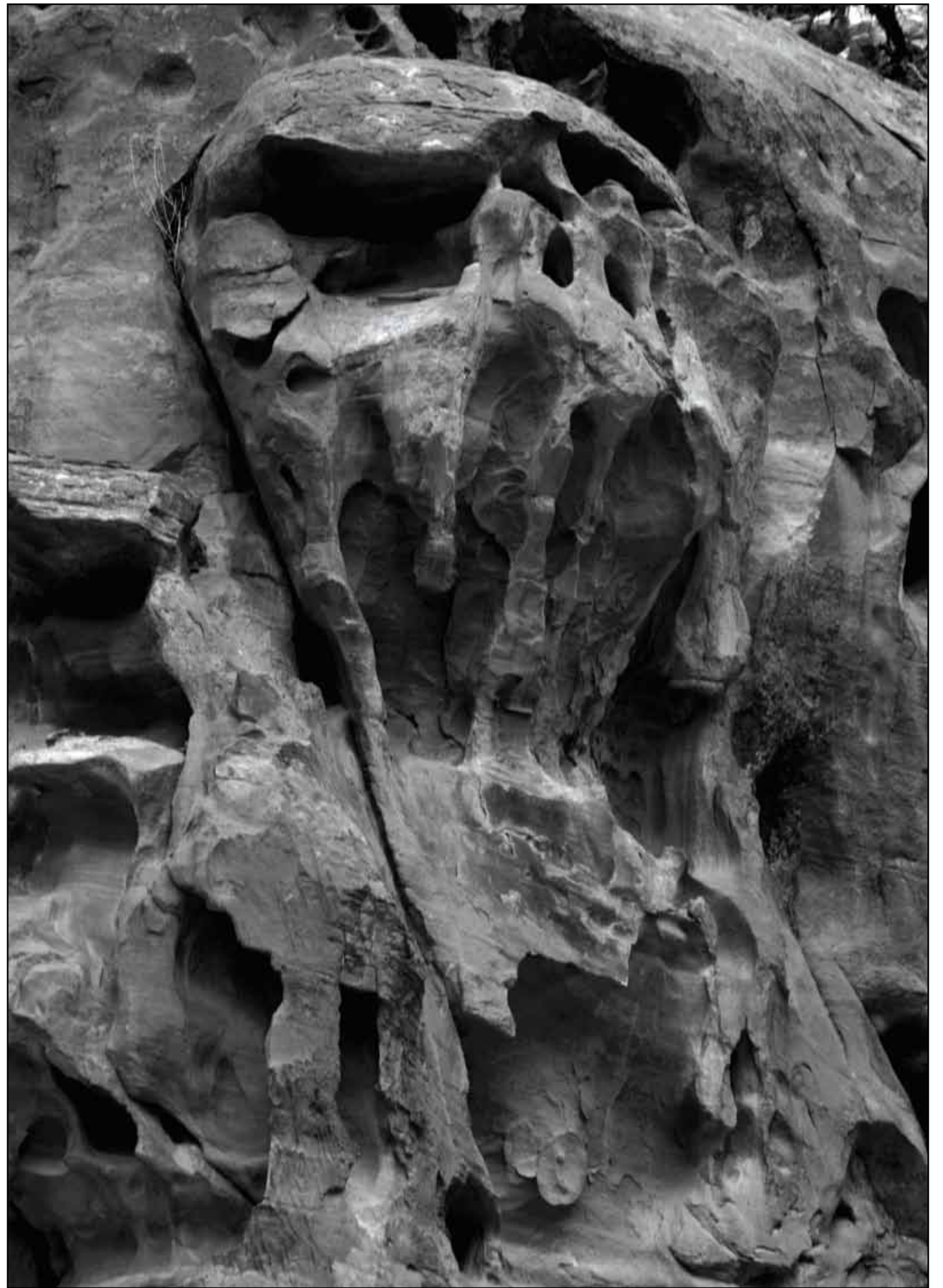




Taos, New Mexico (1988)



Northern Arizona backroads (2011)





20 Mule Team Canyon. Death Valley, California (1989)



Shiprock, New Mexico (Tse Bit a $\dot{\text{i}}$ - 'rock with wings' in Navajo) (1989)



Jerome, Arizona (1988)

*This book is dedicated to the six and a half billion
dead trees standing in Western United States.*



Yellowstone, Wyoming (2019)

Michael Bacon

